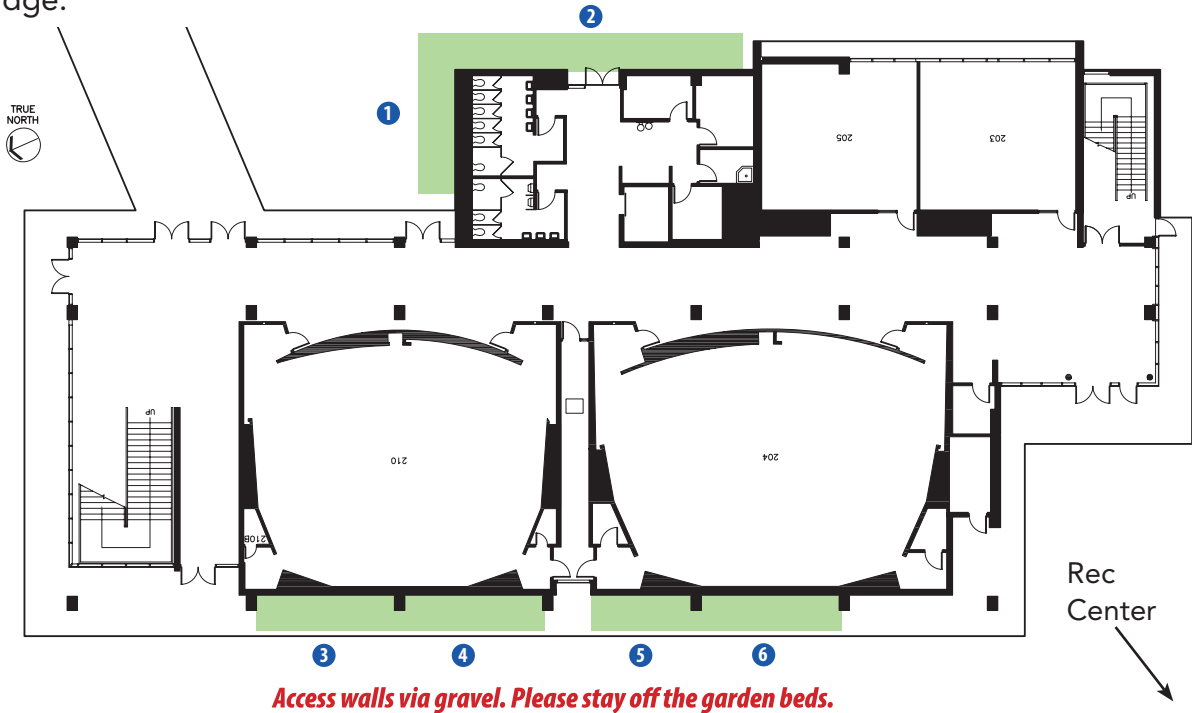


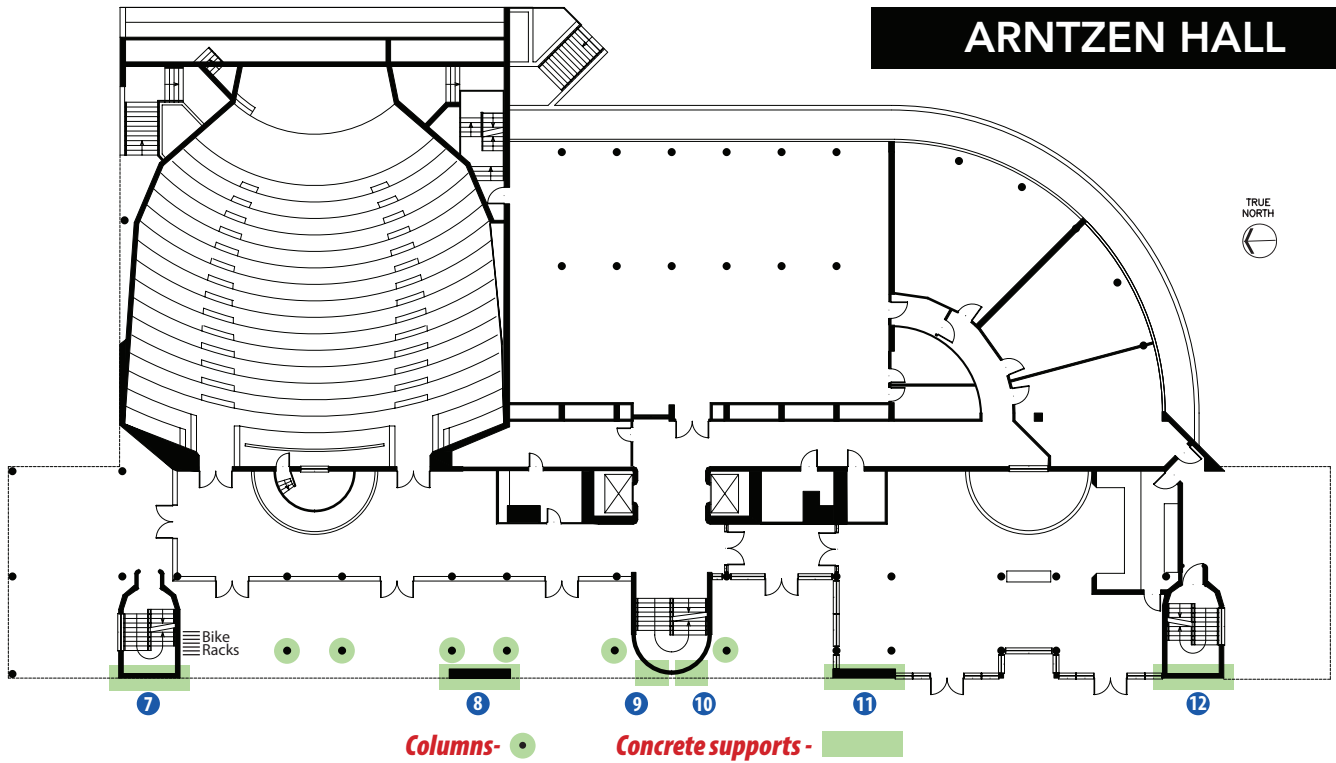
ACADEMIC WEST

Allowed posting area:

Banners, posters and flyers allowed on brick wall facing west towards track and parallel to large walkway, and on brick walls on north and west sides of walkway, south of the aerial bridge.



ARNTZEN HALL



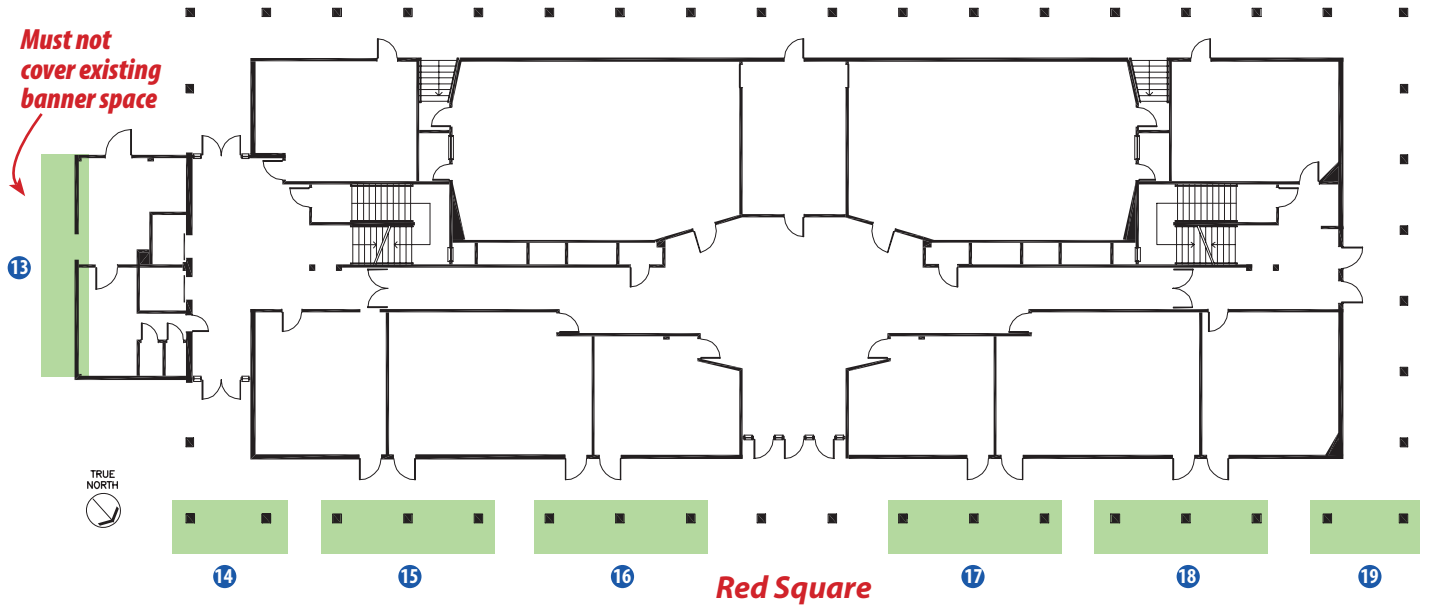
Allowed posting area:

Banners, posters, and flyers allowed on the columns supporting the overhang and the west side concrete supports.

BOND HALL

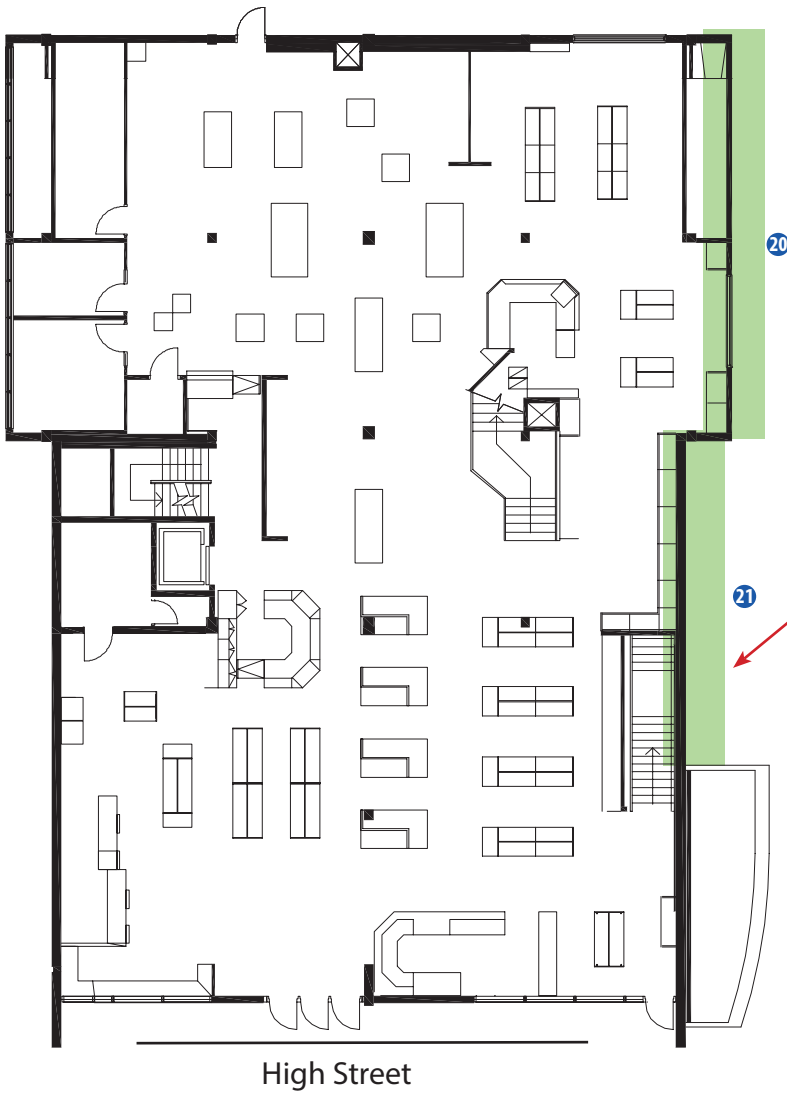
Allowed posting area: Posters and flyers allowed on Red Square side columns. Banners are allowed on SE face of

building, and on the second floor level, below the first row of windows facing Red Square. No banners are allowed on the ground level.



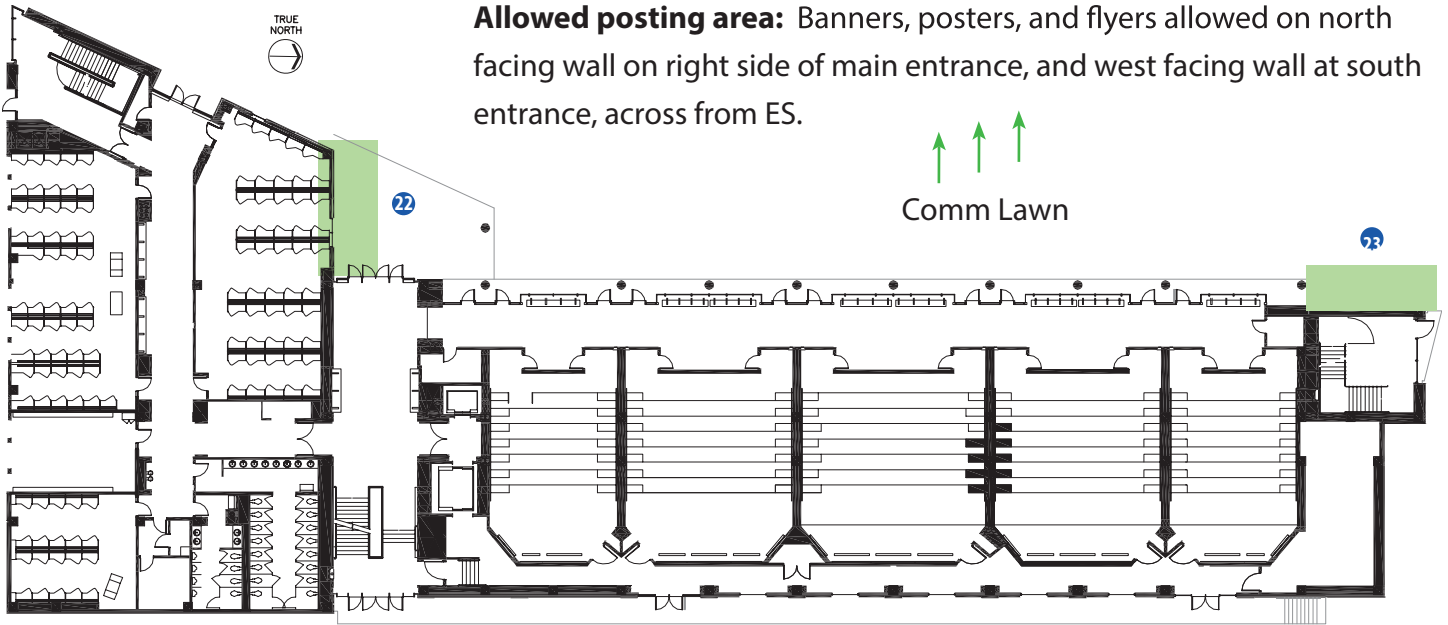
BOOKSTORE

Allowed posting area: Banners, posters and flyers allowed on north walls facing Vendor's Row. Be careful around planters.

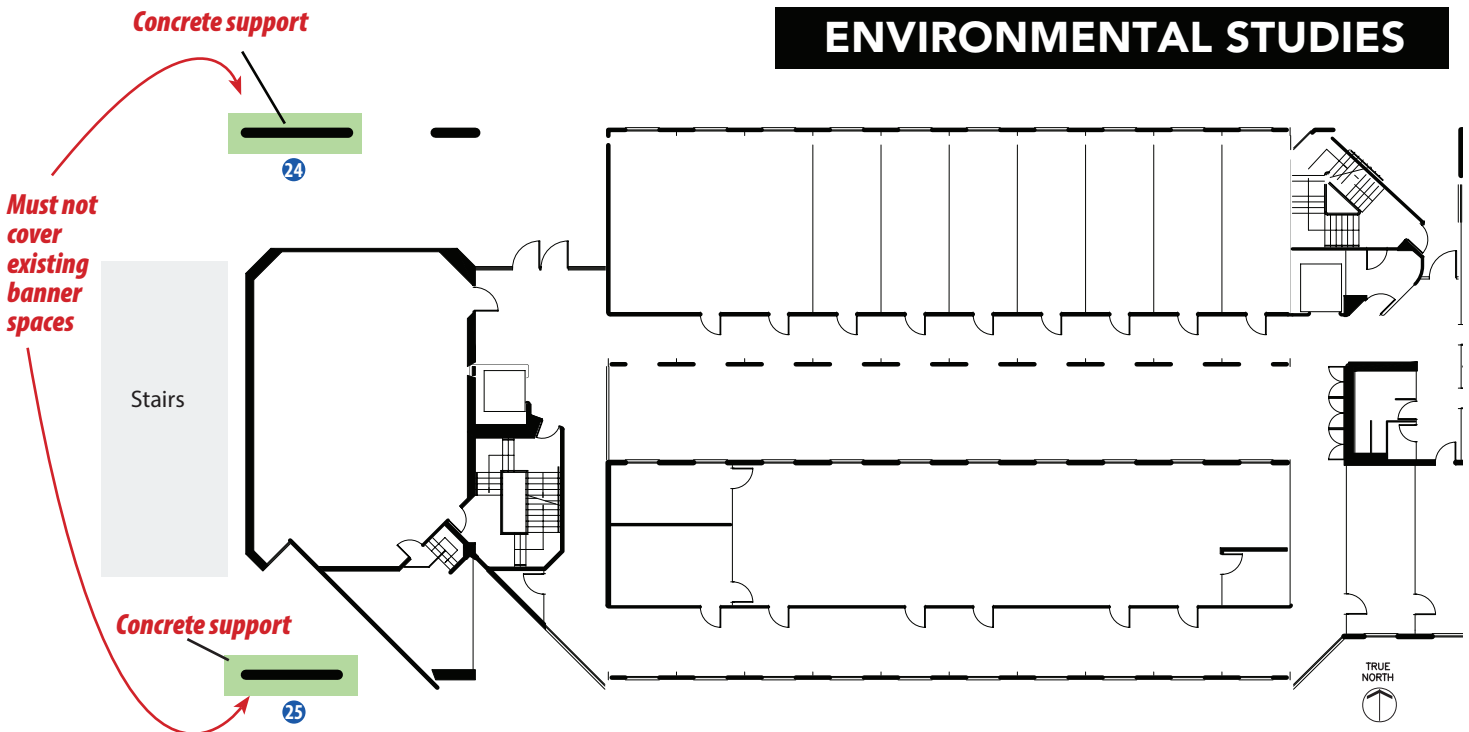


COMMUNICATIONS

Allowed posting area: Banners, posters, and flyers allowed on north facing wall on right side of main entrance, and west facing wall at south entrance, across from ES.



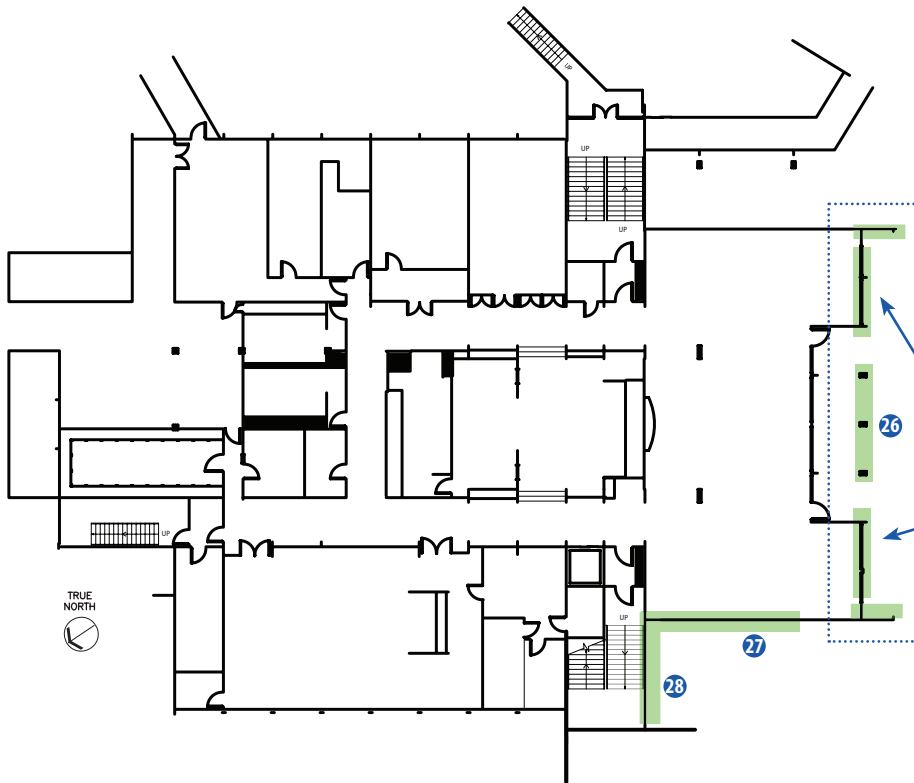
ENVIRONMENTAL STUDIES



Allowed posting area: Concrete supports adjacent to stairs connecting Communications quad with San Juans plaza.

Comm Lawn

FAIRHAVEN COMMONS



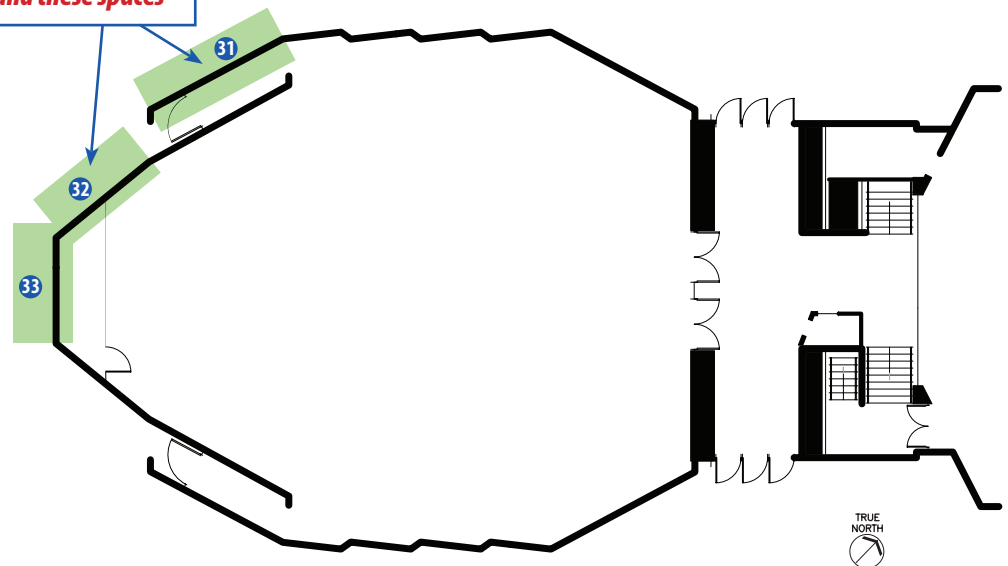
Allowed posting area:

Posters and flyers allowed on concrete or brick surfaces on the exterior of the dining hall, adjacent to the dining exit, on the second floor, and the three support columns in courtyard.

Above

FRASER HALL

*No posting on four designated reserved banner spaces (marked with steel pins in corners).
Ok to post around these spaces*

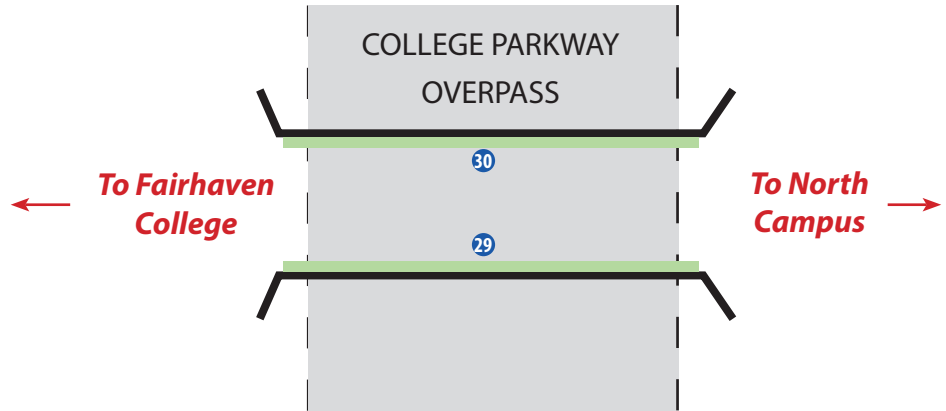


Allowed posting area:

Southwest, angled wall facing Red Square, and south wall behind sculpture.

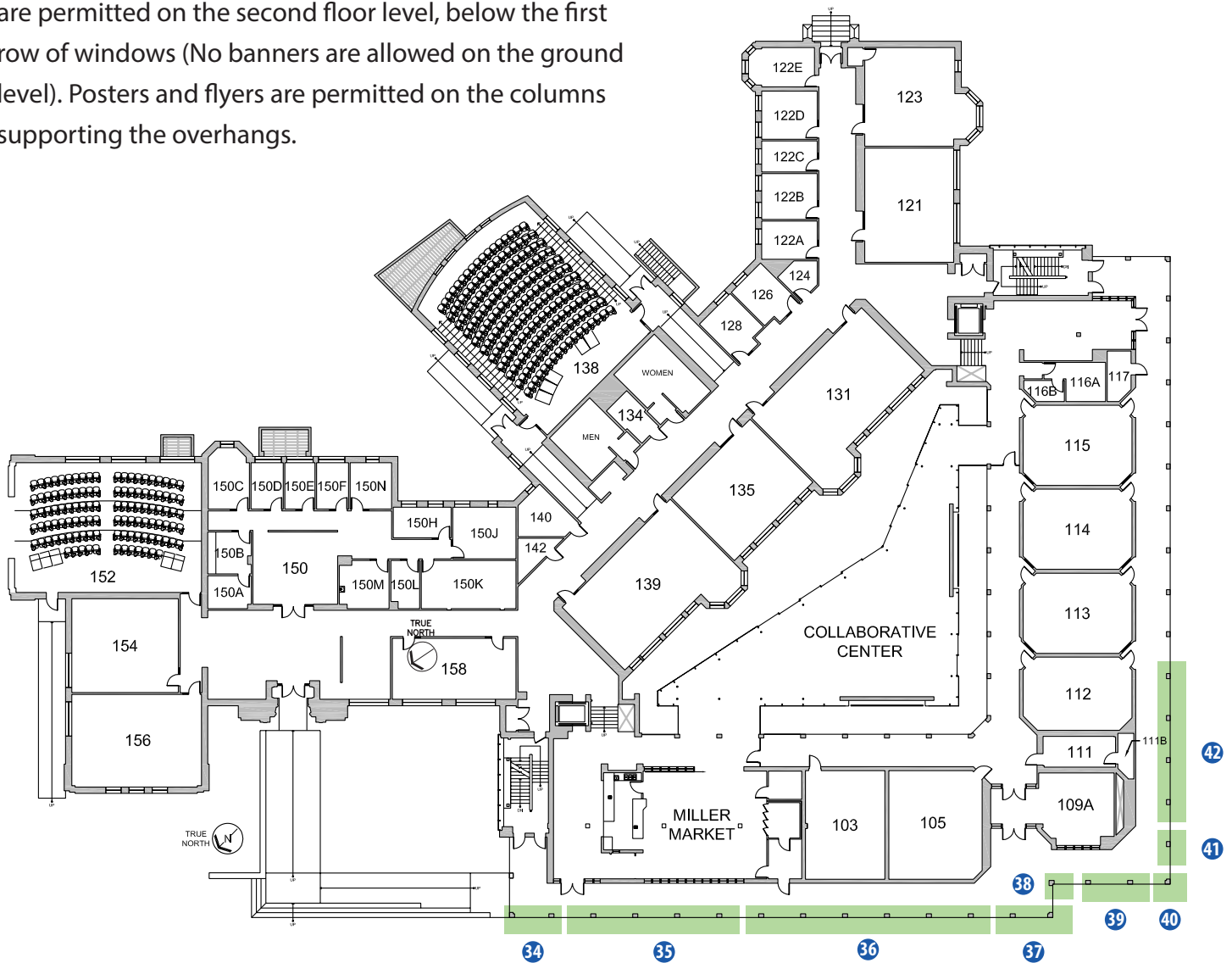
FAIRHAVEN TUNNEL

Allowed posting area: Banners, posters and flyers allowed on interior sides of tunnel

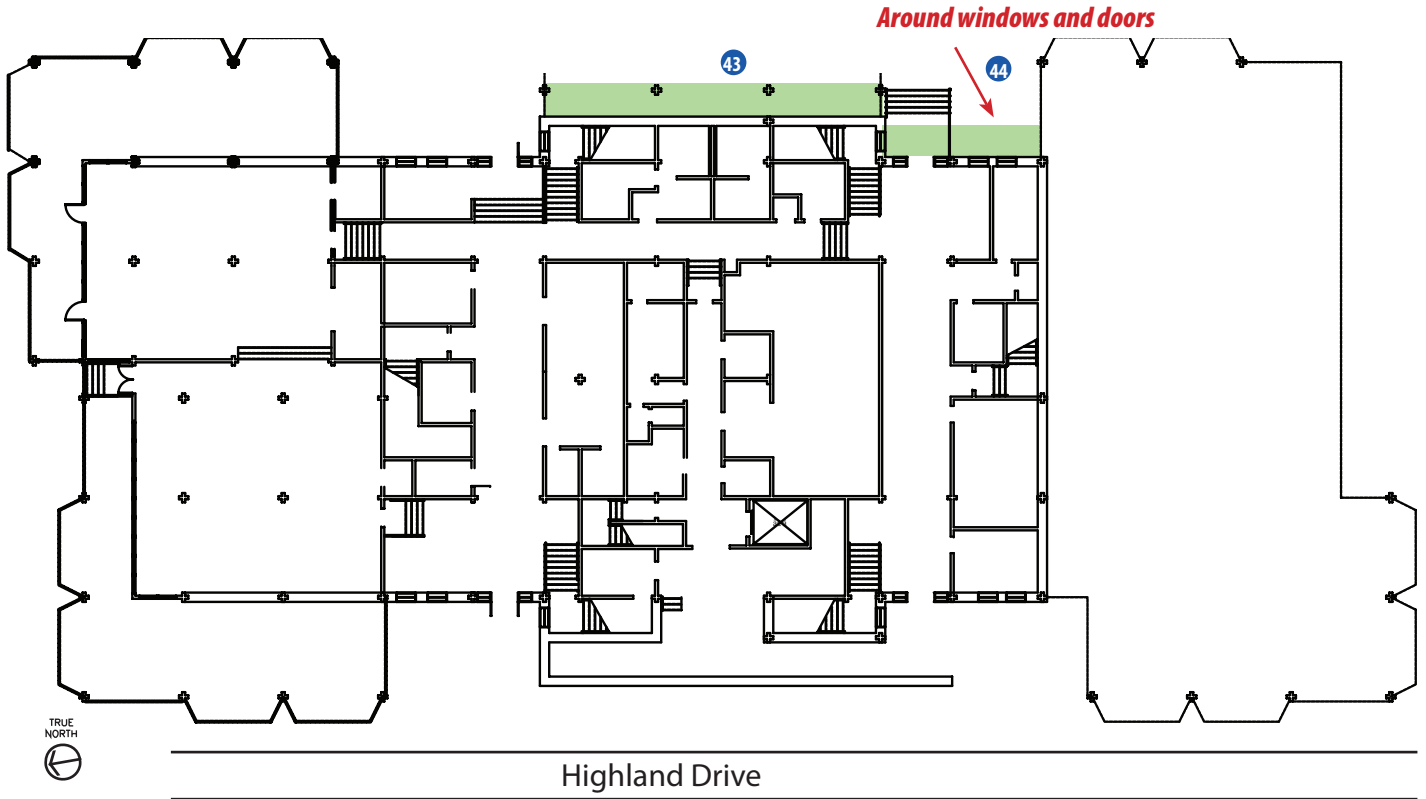


MILLER HALL

Allowed posting area: West and south sides, facing Red Square and the walkway toward Arntzen Hall. Banners are permitted on the second floor level, below the first row of windows (No banners are allowed on the ground level). Posters and flyers are permitted on the columns supporting the overhangs.

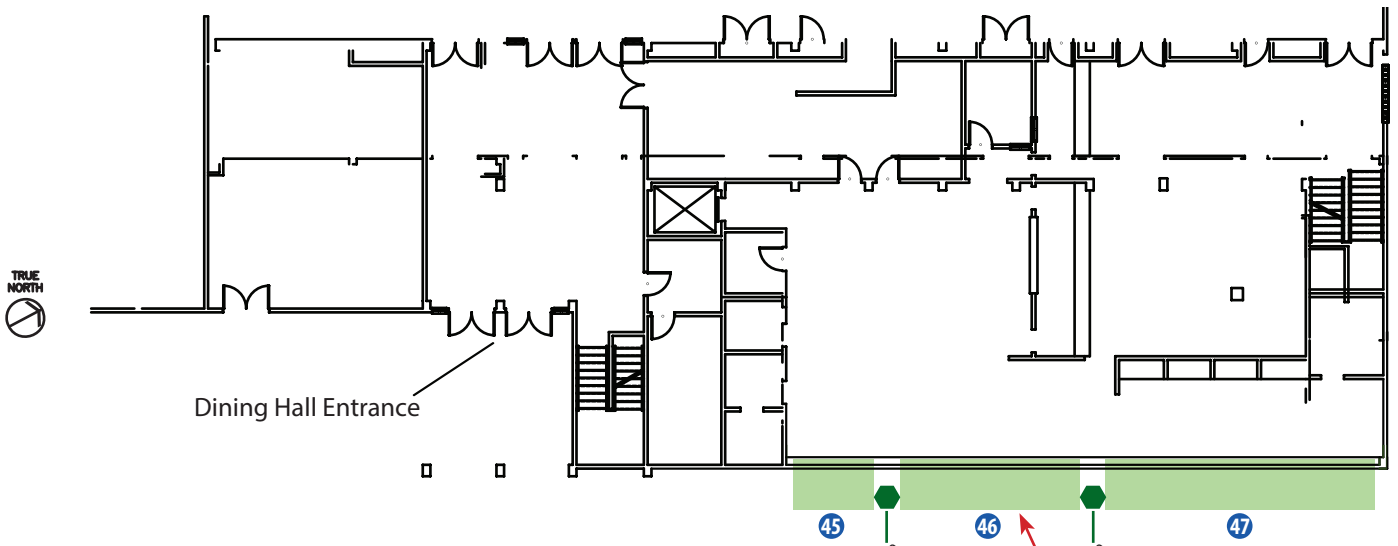


RIDGEWAY COMMONS



Allowed posting area: Banners, posters, and flyers allowed on the brick surface to the right (north) of doorway. Posters and flyers allowed on east facing wall around windows and door at main entrance. No posting over windows or on adjacent walls.

VIKING COMMONS



Allowed posting area: Banners, posters, and flyers allowed on east side of the Commons, facing High Street (along the wall of the VU commons that faces High Street as you walk down the hill toward Mathes)

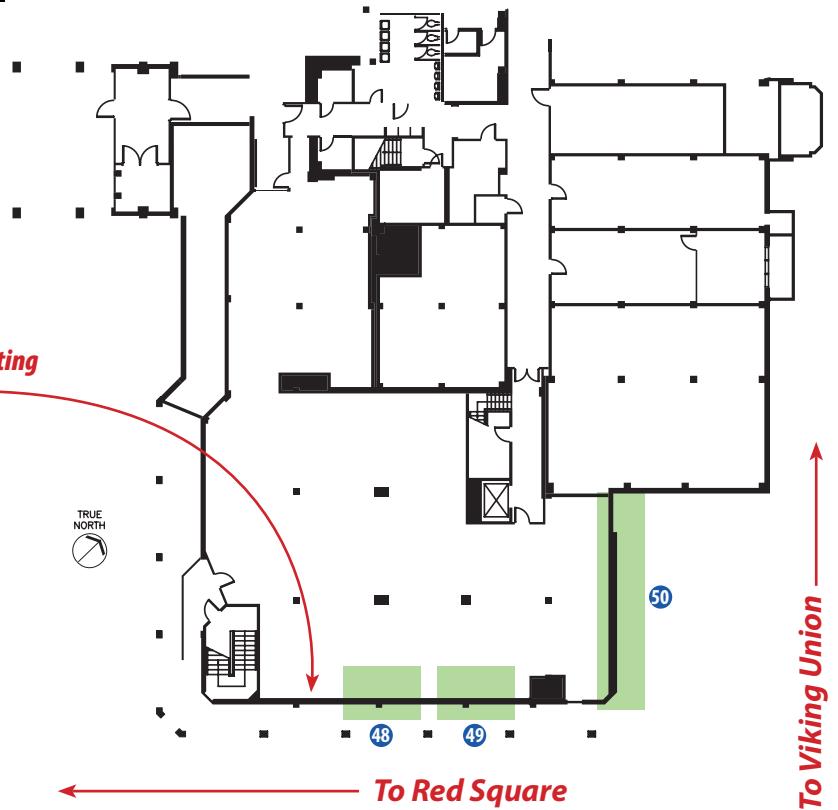
Must not cover existing banner space

WILSON LIBRARY

Allowed posting area:

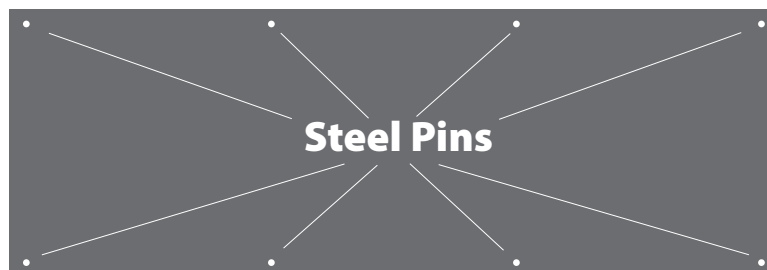
Banners, posters, and flyers allowed on northeast corner of building, facing Old Main lawn and Humanities.

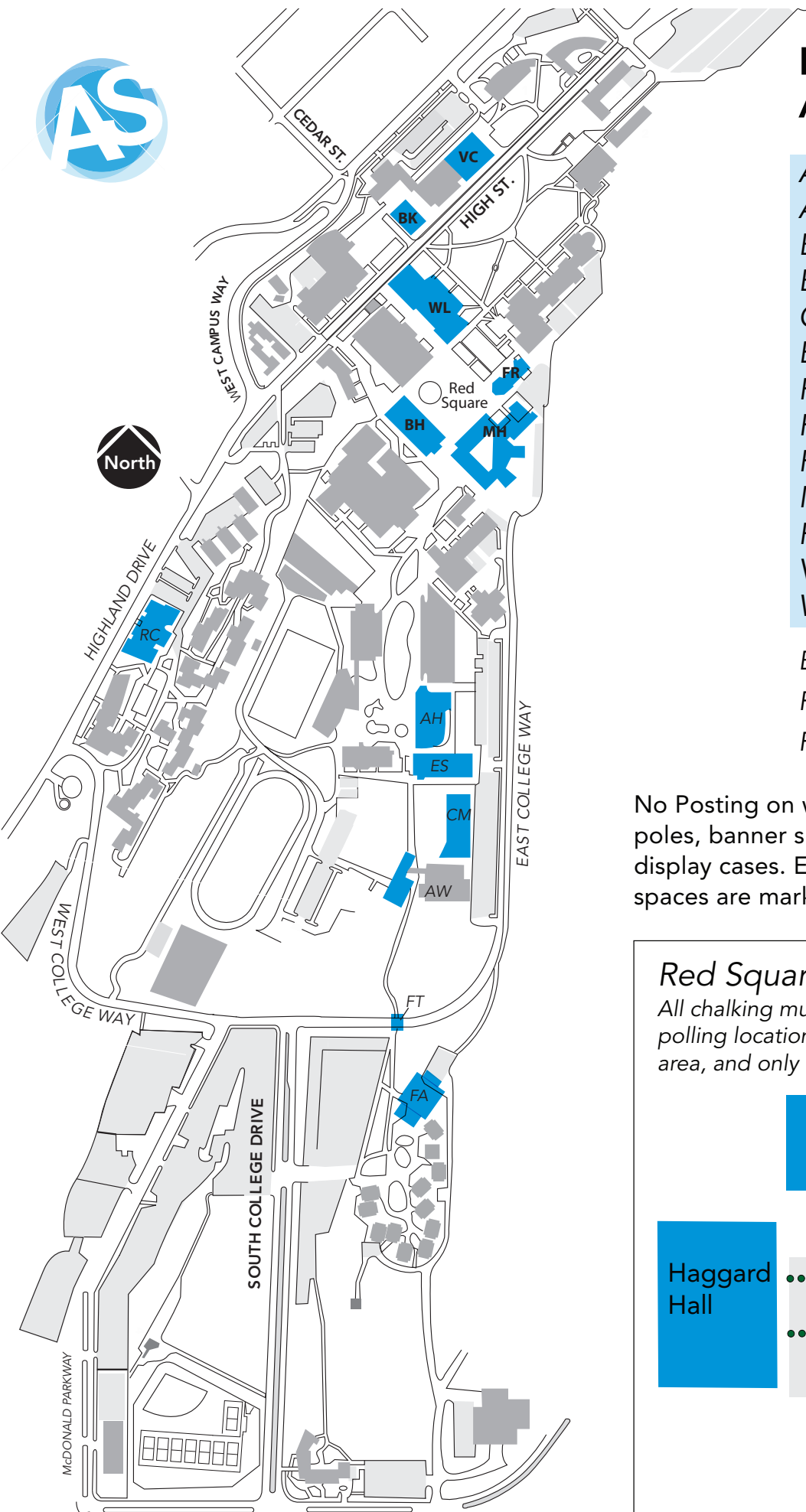
Must not cover existing banner space



Note about existing banner spaces

All permanent banner spaces have steel pins installed in the building wall. Look for a pattern like below to identify these spaces. No posting of election materials in these spaces.





Buildings approved for AS election posting

- AW = Academic West
- AH = Arntzen Hall
- BH = Bond Hall
- BK = Bookstore
- CM = Communications
- ES = Environmental Studies
- FA = Fairhaven Commons
- FT = Fairhaven Tunnel
- FR = Fraser Hall
- MH = Miller Hall
- RC = Ridgeway Commons
- VC = Viking Commons
- WL = Wilson Library

Banner: Maximum size of 3' x 8'
 Poster: No larger than 11" x 17"
 Flyer: No larger than 8½" x 11"

No Posting on windows, vents, doors, light poles, banner spaces, artwork, or glass display cases. Existing permanent banner spaces are marked by steel pins in the wall

Red Square Chalking Guidelines

All chalking must be at least 60 feet away from polling locations, within the approved chalking area, and only on bricks on the ground!

