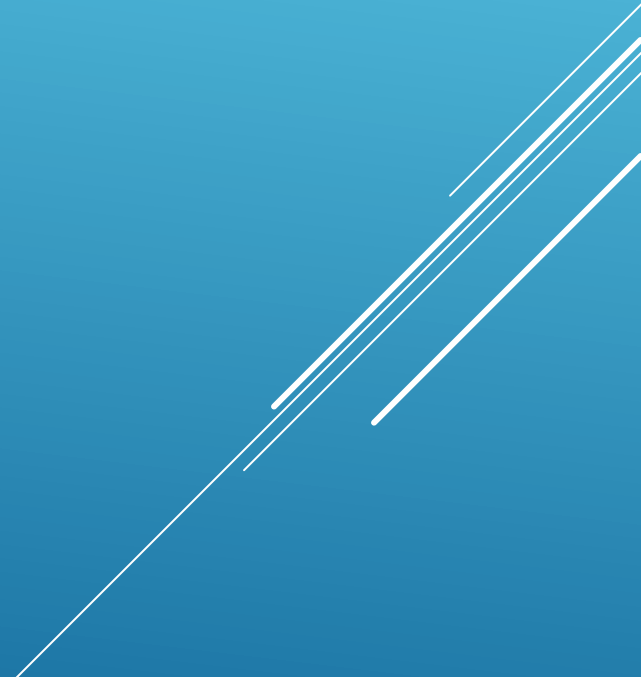




WWU LEGISLATIVE AFFAIRS COUNCIL

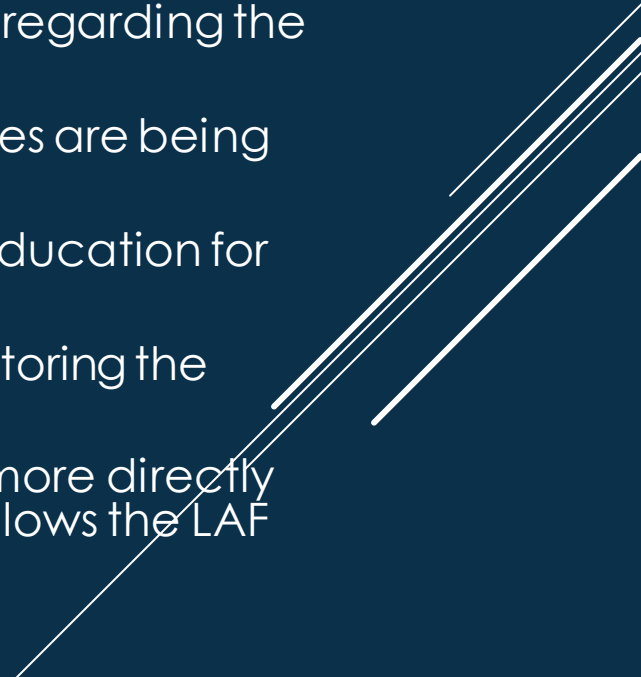
2022-2023




INTRODUCTION!

- ▶ Name
 - ▶ Pronouns
 - ▶ Position on committee
 - ▶ A hope you have for this committee
- 


PURPOSE

- ▶ Encourage civic engagement and student participation in the political process.
 - ▶ Create, review, and propose Local, State, Federal, and other proposed Legislative and Administrative Agendas to the Associated Students of Western Washington University (ASWWU) Executive Board.
 - ▶ Submit recommendations to the Washington Student Association (WSA) regarding the statewide Legislative Agenda.
 - ▶ Establish contact with elected officials to ensure that student perspectives are being considered at all levels of government.
 - ▶ Formulate policy positions for all matters concerning students in higher education for approval by the AS Executive Board.
 - ▶ Review funding request proposals, making financial decisions, and monitoring the expenditures of student funds paid to the Legislative Action Fund.
 - ▶ Approve a budget for the Legislative Action Fund in areas designed to more directly represent Western Students at the local, state and federal level, which follows the LAF budget policy.
- 

ENCOURAGING CIVIC ENGAGEMENT AND STUDENT PARTICIPATION IN THE POLITICAL PROCESS

- Voter registration
 - Calling senators/representatives
 - Support Representation and Engagement Programs
 - Presence at Lobby Days
 - Brainstorm student engagement ideas
 - Support political events on campus
 - Encourage city/county council attendance
- 

CREATING, REVIEWING, AND PROPOSING LOCAL,
STATE, FEDERAL, AND OTHER PROPOSED
LEGISLATIVE AND ADMINISTRATIVE AGENDAS TO THE
ASSOCIATED STUDENTS OF WESTERN WASHINGTON
UNIVERSITY (ASWWU) EXECUTIVE BOARD

- ▶ Western Lobby Day Agenda (January)
 - ▶ Western Intersectional Lobby Day (February)
 - ▶ Local Lobby Day (Spring)
- 

SUBMITTING RECOMMENDATIONS TO THE WASHINGTON STUDENT ASSOCIATION (WSA) REGARDING THE STATEWIDE LEGISLATIVE AGENDA

- ▶ WSA- Washington Student Association
 - Non-profit that connects 4-year public institutions in Washington state to ensure a cohesive legislative agenda
 - UW, WSU, EWU, CWU, Evergreen, Bellevue College
 - Plus satellite campuses and graduate/professional schools
- ▶ WSA has a legislative agenda that is voted on by all members

ESTABLISHING CONTACT WITH ELECTED OFFICIALS TO ENSURE THAT STUDENT PERSPECTIVES ARE BEING CONSIDERED AT ALL LEVELS OF GOVERNMENT

- ▶ Lobby Days
 - ▶ Director of Legislative Affairs – Naira Gonzales Aranda
 - ▶ Local Liaison- Teagan Hudson
 - ▶ Call/write Senators/Representatives
- 


REVIEWING FUNDING REQUEST PROPOSALS, MAKING FINANCIAL DECISIONS, AND MONITORING THE EXPENDITURES OF STUDENT FUNDS PAID TO THE LEGISLATIVE ACTION FUND

- ▶ Legislative Action Fund - \$1/quarter
- ▶ ~\$45,000/yr
- ▶ LAC receives requests for expenditures, they are voted on in LAC
- ▶ Our budget is not controlled by the AS Executive Board, separate from S&A fees

Required fees (not included in the tuition chart above) (1-5 credits):


Technology	17.50
Sustainable Action Fund (.90 per credit)	.90 per credit

Required fees (not included in the tuition chart above) (6+ credits):

Health Service	113.00
Non-Academic Building Fee	45.00
Recreation Center Fee	105.25
Technology	35.00
Sustainable Action Fund (.90 per credit, \$9 max)	9.00
 Legislative Action Fee	1.00
Multicultural Student Center Fee	30.00
Alternative Transportation Fee	26.25
Total	\$364.50

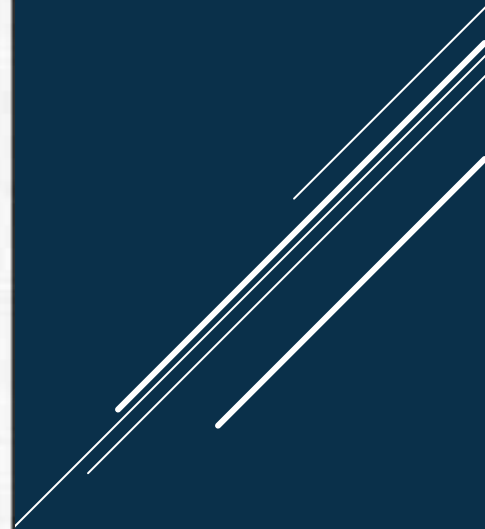
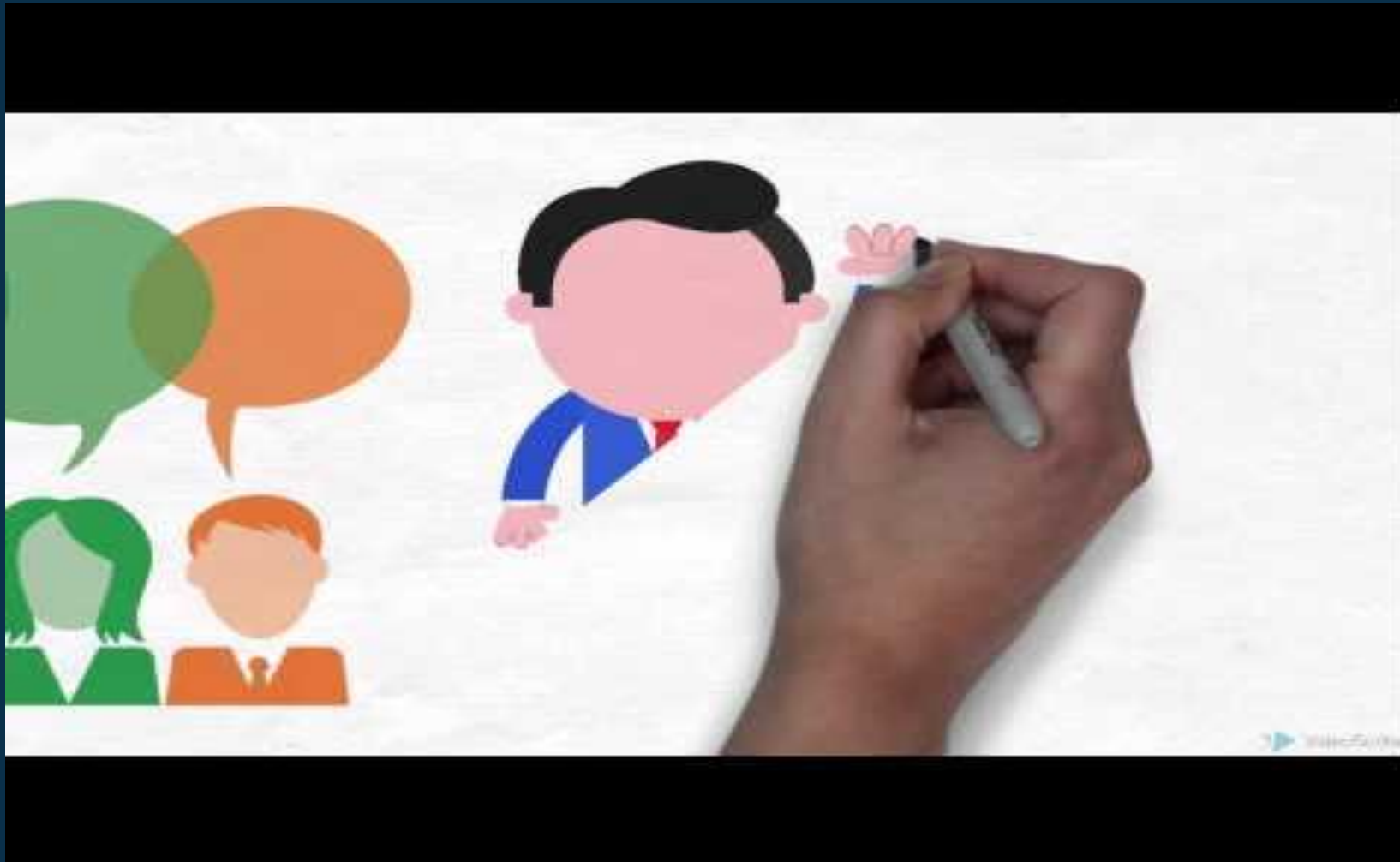
Enrollment Fee (First time students only)	\$280.00
--	-----------------

APPROVING A BUDGET FOR THE LEGISLATIVE ACTION FUND IN AREAS DESIGNED TO MORE DIRECTLY REPRESENT WESTERN STUDENTS AT THE LOCAL, STATE AND FEDERAL LEVEL, WHICH FOLLOWS THE LAF BUDGET POLICY

- ▶ ~\$15,000 goes to WSA dues
 - ▶ Lobby Day
 - ▶ "Encouraging civic engagement"
 - ▶ Text/phone banking
 - ▶ State Candidate Forum
 - ▶ Local Issues Forum
- 

MEMBERSHIP

- ▶ 13-15 members. Quorum 7-8
- ▶ AS Vice President for Governmental Affairs or designee (Chair)
- ▶ AS Director of Legislative Affairs (Vice-chair)
- ▶ AS Local Liaison
- ▶ AS OCE Voter Engagement and Recruitment Coordinator
- ▶ 5-7 Students at-Large, appointed by the AS Executive Board (OCE employees not allowed)
- ▶ **1 - Graduate Student or Graduate Student Advisory Council (GSAC) Representative**
- ▶ **1 - ESC Representative (appointed by ESC Presidents Council)**
- ▶ **1 - ESP Representative (appointed by the ESP Director)**
- ▶ **1 – LGBTQ+ Western Representative (appointed by LGBTQ+ Director)**
- ▶ Secretary (non-voting)
- ▶ OCE Director (non-voting)
- ▶ Associate Dean of Student Representation and Engagement (Advisor, non-voting)



QUESTIONS & CLARIFICATIONS

COMMITTEE NORMS FOR THE YEAR

A decorative graphic consisting of several parallel white lines of varying lengths, slanted upwards from left to right, located in the bottom right corner of the slide.