





“Good design can be **the
connective tissue of a place.**”

Majora Carter

A photograph of a classroom. In the background, a teacher wearing a striped shirt stands with their back to the camera, pointing at a large green chalkboard. In the foreground, a student's hand is visible holding a smartphone, looking at the screen. The student is sitting at a desk with a notebook. The text "Unrealized Education" is overlaid in the center of the image.

Unrealized **Education**

A photograph of a two-story, weathered house with a porch, overlaid with the text "Bellingham Housing". The house is light-colored with dark trim and has a porch with a wooden railing. The porch has a yellow door and a red door. The house is surrounded by trees and a lawn. The text "Bellingham Housing" is written in white, with "Bellingham" in a serif font and "Housing" in a bold sans-serif font.

Bellingham **Housing**

Average rents and vacancy rates in Bellingham



Our **Tiny House**

230 Square Feet • Grid-Tied • Constructed on a Trailer (RV) • Energy Efficient • Net-Zero







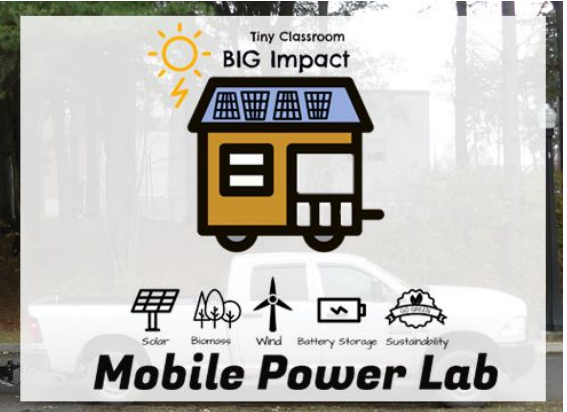
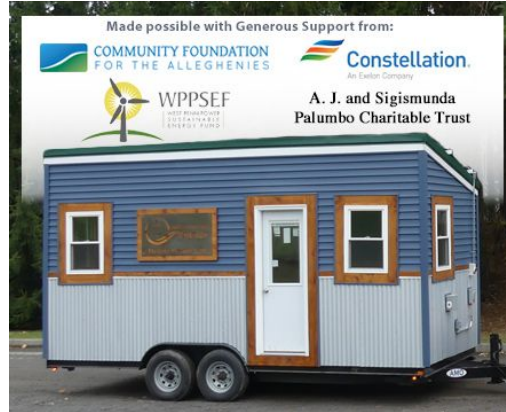


Case Studies Across The Nation



"So much of what we do at school is academic. Nothing makes that stick like designing and building."

- Henry Sorenson, Professor of Architecture, MSU



Student Momentum



WESTERN STUDENTS CONSTRUCTING TINY HOMES

Mar

STUDENTS COLLABORATING TO BUILD FIRST STUDENT-LED TINY HOUSE

May



Project Zeneth
@projectzeneth

Home

About

Photos

Posts

Community

Create a Page



Liked Following Share

Status Photo/Video



Write something on this Page...

Photos



WWU
@WWU

Follow

Students at Western are designing and building a zero-net-energy house to address local housing issues and educate the University and community about sustainable home design as part of an initiative called "Project ZeNETH." ow.ly/86FV30k9akY



9:45 AM - 28 May 2018

2 Retweets 9 Likes



2



9



sustainable practices.

Interdisciplinary **Education**

Colleges Involved

Fairhaven College

College of Business and
Economics

Huxley College

College of Humanities and Social
Sciences

College of Science and
Engineering

Course Integration

Energy Studies

Sociology

Industrial Design

Sustainable Construction

Urban Planning

Entrepreneurship and Innovation

Environmental Policy

Project Management

Clubs Contacted

National Society of Black Engineers

Students for Renewable Energy

Native American Student Union

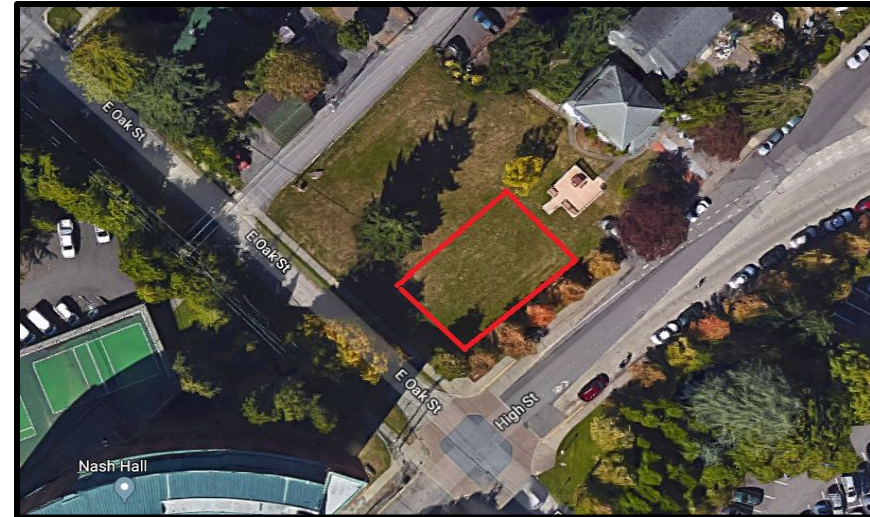
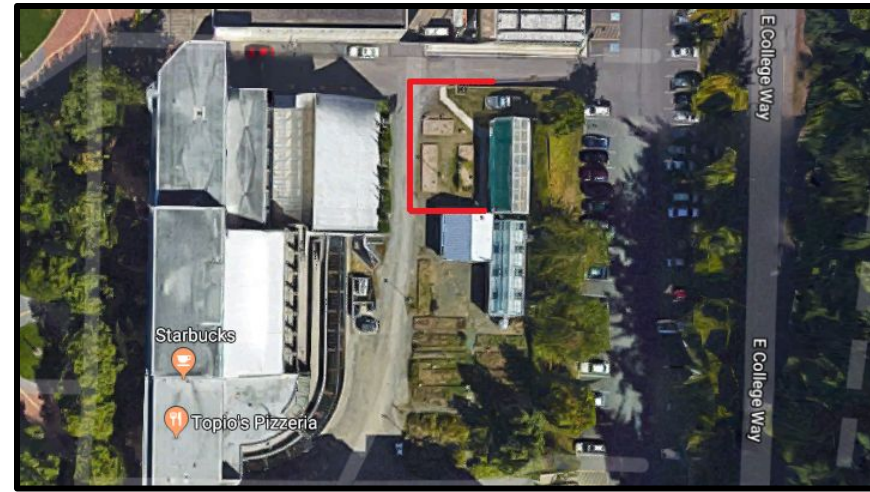
Urban Planning Club

Energy Union

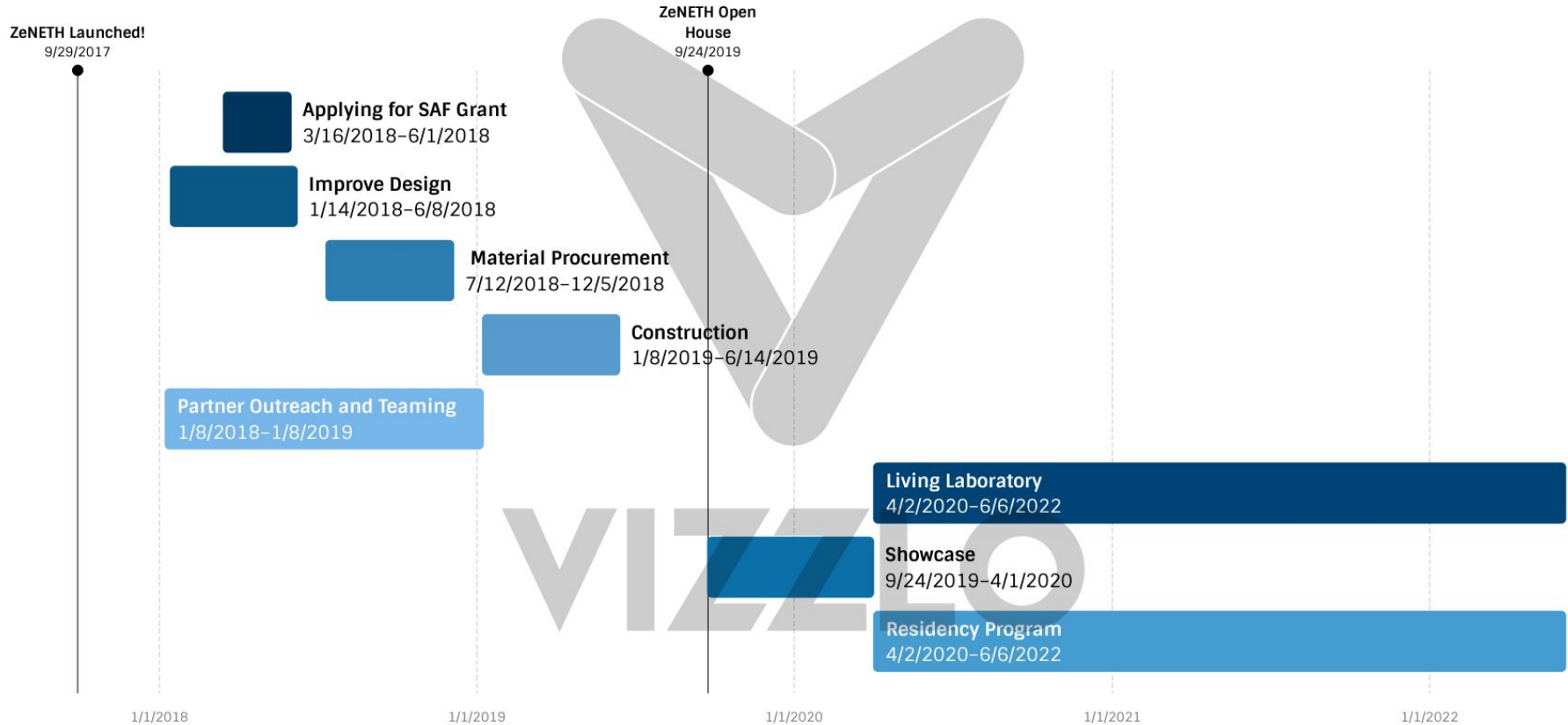
Society for the Advancement of
Chicanos/Hispanics and Native
Americans in Science

Women in Energy Management
Network

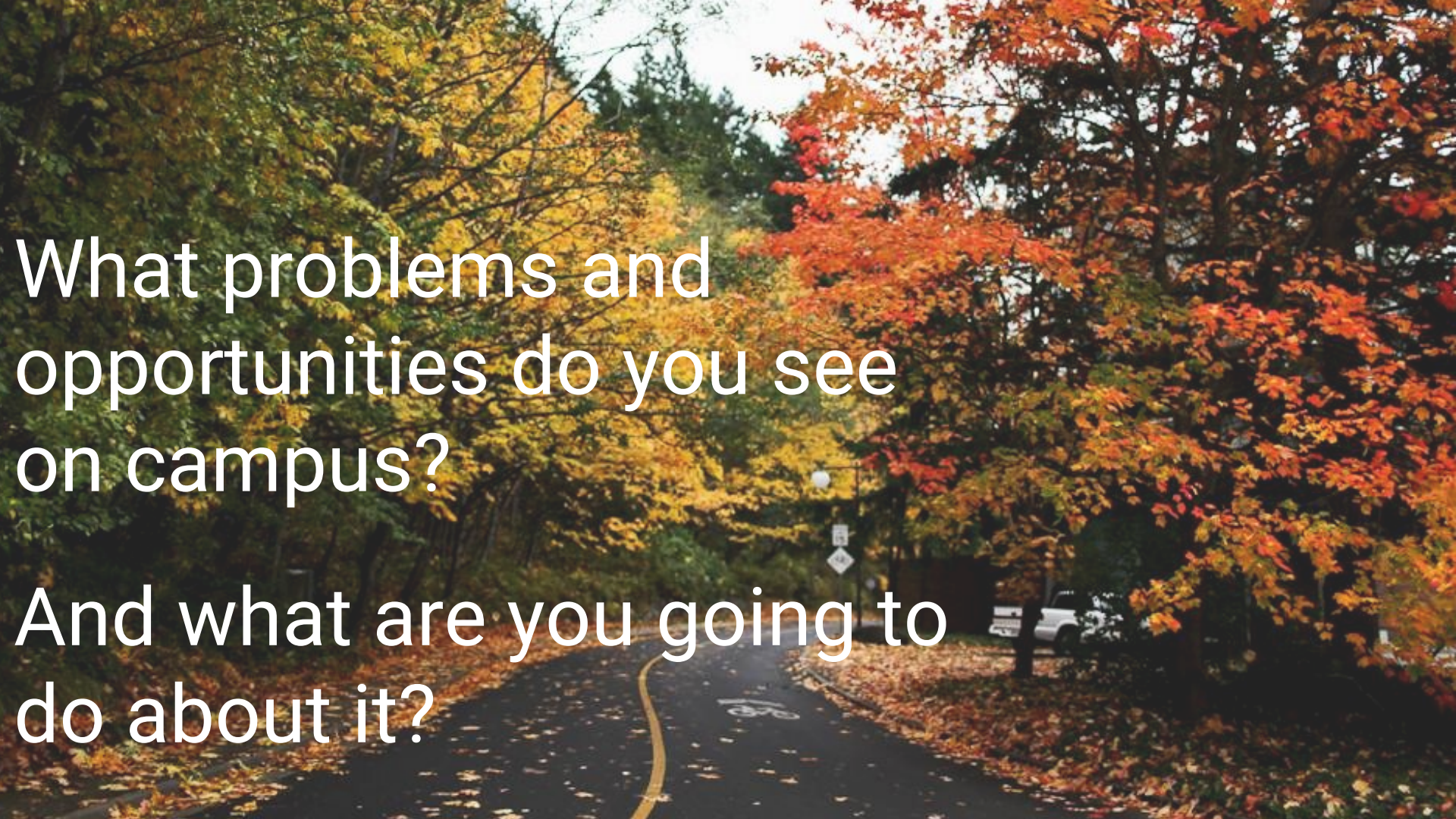
On Campus Siting



Project Timeline



Why are you here
today?



What problems and opportunities do you see on campus?

And what are you going to do about it?

Resources

- Your fellow students
- The faculty and staff (who you're paying for, by the way)
- SAF, IDEA, Qualtrics, etc.



How can you **get involved?**

We are currently looking for students experienced in:

- Graphic Design
- Marketing
- Education
- Outreach
- Construction

Have we missed something? **Please contact us with your ideas.**

Survey

Open your
camera and
focus on this
QR code:



*This survey is anonymous

A wide-angle, low-perspective shot of a vast solar farm. The rows of solar panels stretch far into the distance, creating a strong sense of depth. The panels are dark blue with a grid of thin silver lines. Above the panels, the sky is a deep, clear blue, dotted with a few wispy white clouds. The overall mood is clean, modern, and hopeful.

Thank **You**



Follow Along

@projectzeneth



Our Website

<https://wp.wwu.edu/projectzeneth/>

